



BB8 8SS

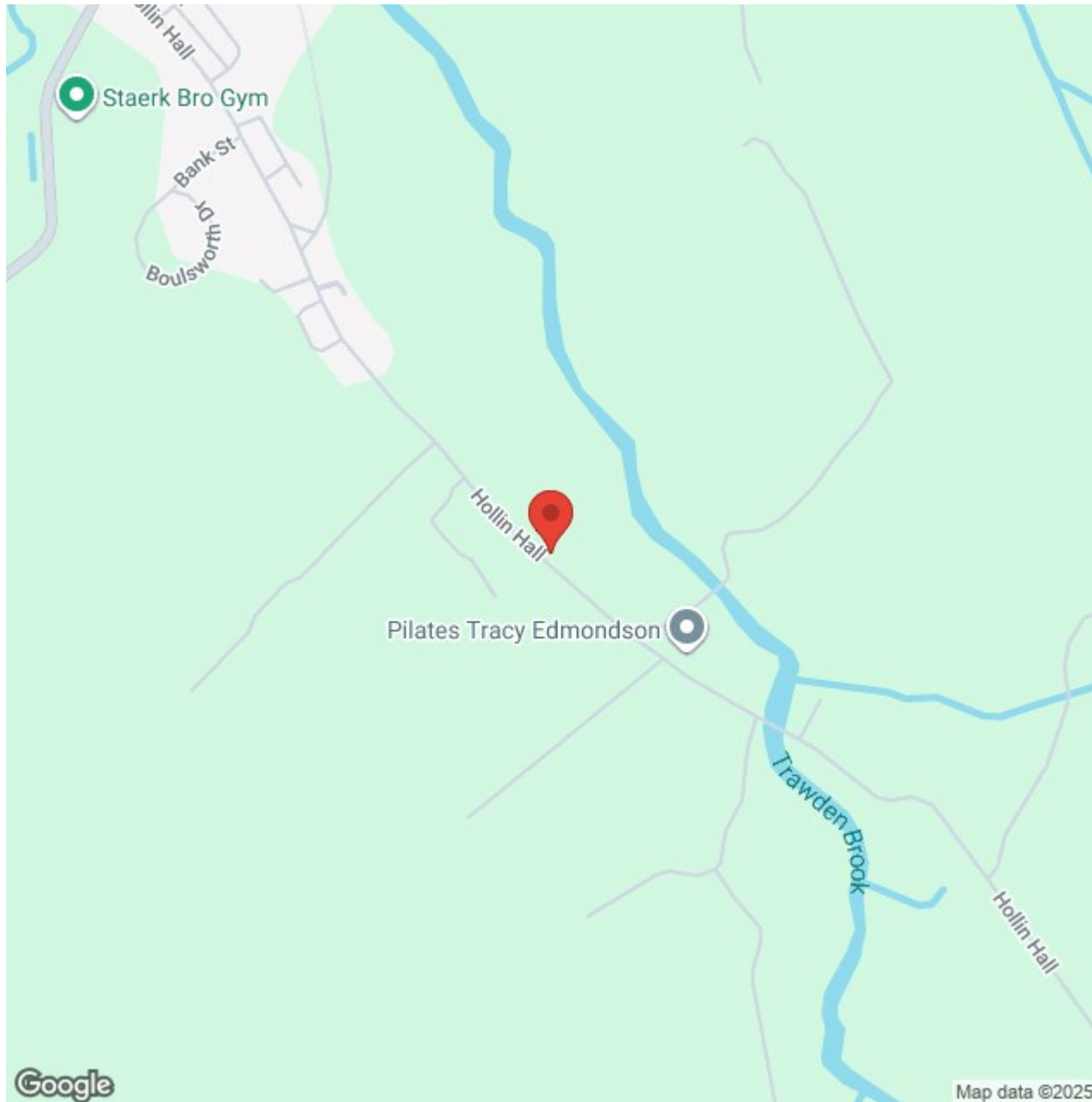
Hathaway Cottage, Hollin Hall, Trawden

Offers In The Region Of £219,950

- Beautiful stone-built cottage in a sought-after village setting
- Two bedrooms and a modern shower room
- Spacious living room with feature fireplace and stove
- Contemporary kitchen with countryside views
- Elevated rear terrace with stunning open outlook
- Character features combined with modern finishes

A beautifully presented stone-built cottage with stunning open countryside views, blending charming period character with stylish modern finishes. Situated in the sought-after village of Trawden, Hathaway Cottage offers a perfect balance of cosy, comfortable living and contemporary convenience. The property boasts two well-proportioned bedrooms, a modern shower room, a spacious living room, and a stylish kitchen, all complemented by an elevated rear sun terrace where you can enjoy breathtaking panoramic views.







Lancashire

A beautifully presented stone-built cottage with stunning open countryside views, blending charming period character with stylish modern finishes. Situated in the sought-after village of Trawden, Hathaway Cottage offers a perfect balance of cosy, comfortable living and contemporary convenience. The property boasts two well-proportioned bedrooms, a modern shower room, a spacious living room, and a stylish kitchen, all complemented by an elevated rear sun terrace where you can enjoy breathtaking panoramic views.

GROUND FLOOR

ENTRANCE PORCH

LIVING ROOM 19'5" x 15'5" (5.932m x 4.723m)

A warm and inviting reception space featuring exposed ceiling beams, a stone fireplace with multi-fuel stove, and stone flagged flooring. The room is flooded with natural light from the feature cottage window to the front, while French doors to the rear open out onto the sun terrace. Ample space for both seating and dining areas.

KITCHEN 7'3" x 15'6" (2.230m x 4.741m)

A modern, well-appointed kitchen with a range of light grey shaker-style wall, base, and tall units complemented by solid wooden work surfaces. The design includes an integrated oven with hob and extractor, ceramic sink beneath a large

window showcasing countryside views, and space for appliances. Stone feature wall and access door leading directly to the rear terrace.

FIRST FLOOR / LANDING

BEDROOM ONE 10'5" x 15'6" (3.200m x 4.745m)

A generously sized double bedroom positioned to the front of the property, offering space for a range of furniture. Dual cottage windows allow plenty of natural light.

BEDROOM TWO 8'9" x 9'4" (2.671m x 2.851m)

A good-sized single room to the rear, ideal as a child's bedroom, guest room, or home office, with an elevated view over rolling fields.

SHOWER ROOM

A contemporary three-piece suite comprising a walk-in shower with rainfall head, low-level WC, and a stone wash bowl basin set upon a wooden vanity unit. Finished with modern wall tiling and a rear window framing countryside views.

LOCATION

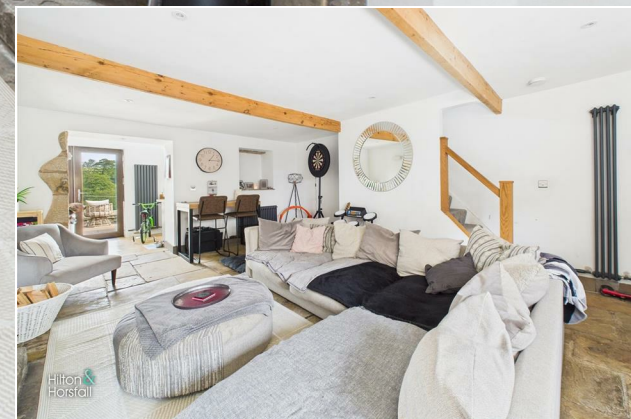
Hathaway Cottage is located in the picturesque village of Trawden, surrounded by stunning countryside yet within easy reach of local amenities, schools, and transport links. The area is renowned for its community feel, walking routes, and scenic landscapes, making it perfect for those seeking a peaceful lifestyle without sacrificing convenience.

PROPERTY DETAIL

PUBLISHING



Hilton &
Horsfall



Hilton
Horsfall

BB8 8SS

OUTSIDE

To the front is a stone frontage in keeping with the charming village setting. To the rear, the property boasts an elevated sun terrace with glass balustrade, perfect for al fresco dining or simply relaxing and taking in the uninterrupted rural scenery.







Hilton &
Horsfall



Hilton &
Horsfall

75 Gisburn Road
Barrowford
Lancashire
BB9 6DX

w. hilton-horsfall.co.uk
t. [01282 560024](tel:01282560024)

20 Wellgate
Clitheroe
Lancashire
BB7 2DP

w. hilton-horsfall.co.uk
t. [01200 435667](tel:01200435667)